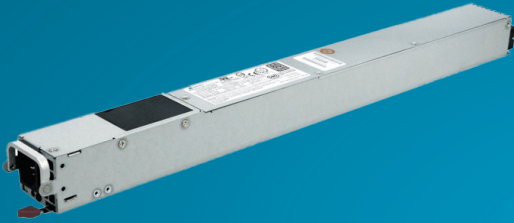


CDR-2621-2M1

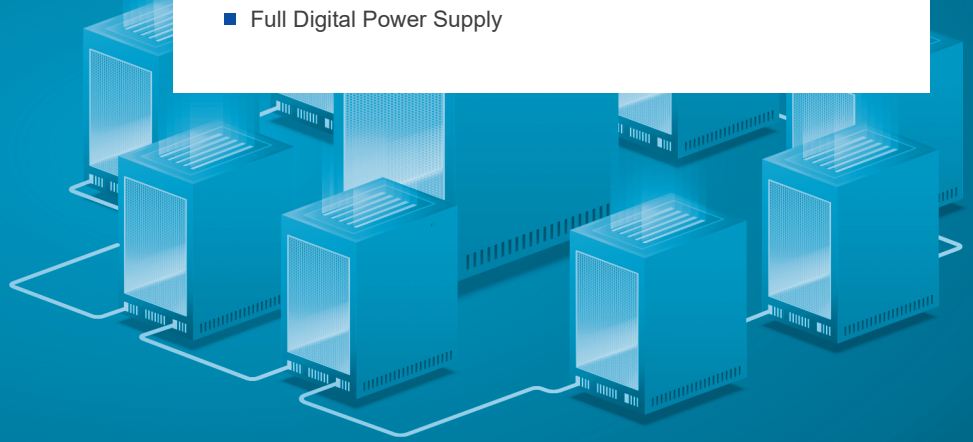
2600W Slim Power Supply AC/DC to DC Dual-input Redundant

FEATURES

- High Efficiency: 96%
- Hot Swappable
- PMBus Support
- Full Digital Power Supply
- Smart Fan Speed Control
- Active Power Factor Correction
- In-system Firmware Upload



■ Dimension : 480 x 45 x 40 mm (D x W x H)



SPECIFICATIONS

▶ INPUT

Voltage	AC input: 180 - 264Vac DC input: 180 - 300Vdc
Frequency	47 - 63Hz
Current	AC 180-264V / 15 - 12.5A DC 220-240V / 13.5A - 12.5A

▶ EFFICIENCY, PFC, THD

Load (%)	Input 230Vac		
	Input current THD	Power Factor	Efficiency
10%	18%	0.9	90%
20%	10%	0.95	94%
50%	5%	0.95	96%
100%	5%	0.98	92%

▶ OUTPUT

Parameter	12V (208 - 240Vac)	12Vsb
Max Load	216.6A	4.5A
Regulation	±5%	±5%
Ripple & Noise	120mVp-p	120mVp-p

▶ PROTECTION, RELIABILITY, WARRANTY

Over Current Protection (OCP)
Over Power Protection (OPP)
Over Voltage Protection (OVP)
Over Temperature Protection (OTP)
Short Circuit Protection (SCP)
Holdup Time: 12ms @ 75% Load
MTBF: >200,000 hours @ 25 °C
Warranty: 3 Years

▶ ENVIRONMENTAL

Temperature	Operating : 0 to 45°C Non-operating : -10 to 70°C
Altitude	Operating : to 16,500 feet (5,000 meters) Non-operating : to 35,000 feet (10,580 meters)
Relative humidity	Operating : 20% to 90% RH, Non-condensing Storage : 5% to 95% RH, Non-condensing

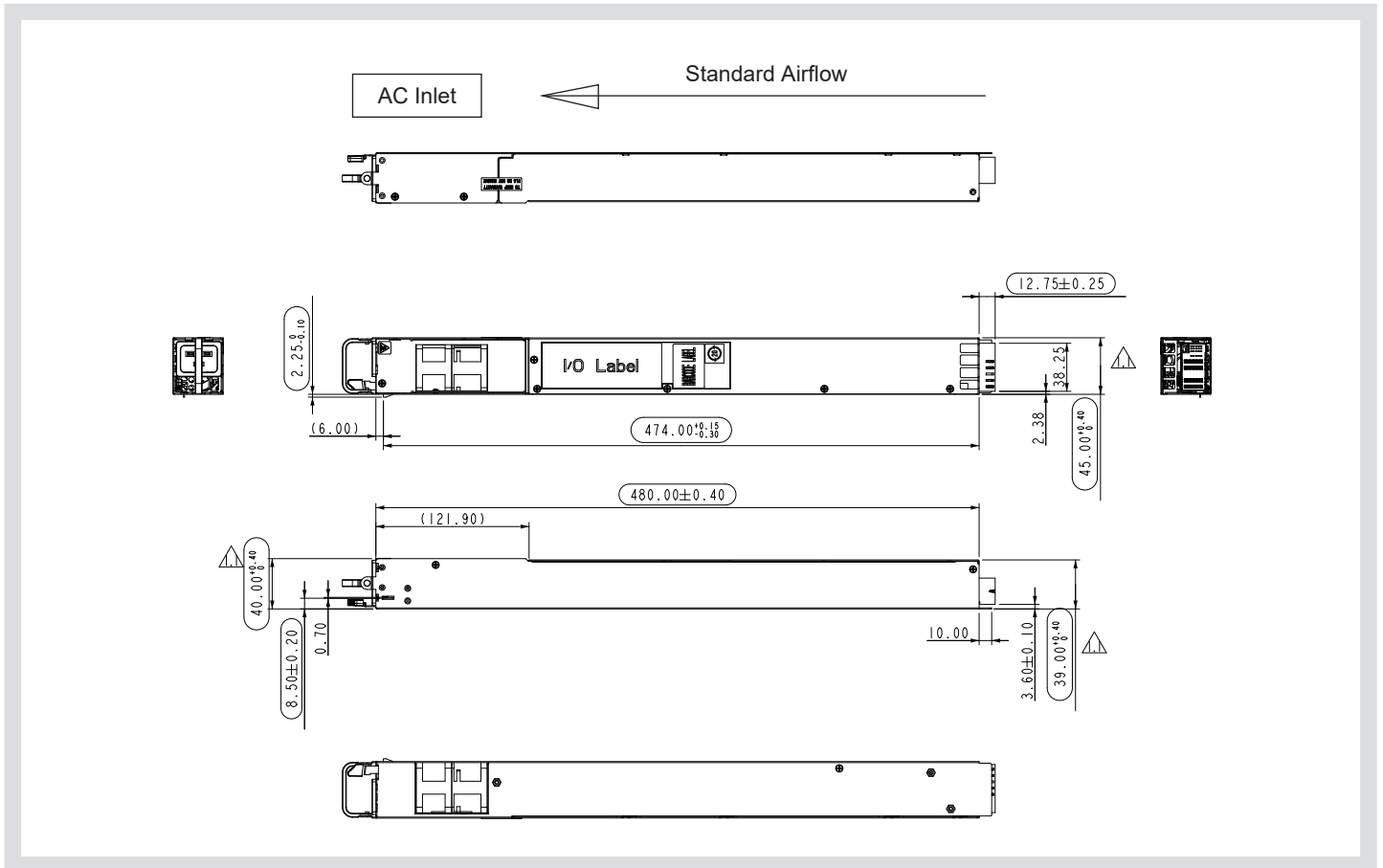
SAFETY AND COMPLIANCE

UL, cUL, CE, CQC, BSMI, CB, FCC class A, CISPR Class A, RoHS

CDR-2621-2M1



MECHANICAL DRAWING



CONNECTORS

AC Inlet	IEC 320 C-20, 20A / 250Vac
DC Output	TE: P/N: 2204456-X 4HP+2LP+20S
DC Output Mating	TE: P/N: 2204416-X or equivalent parts

★ Product details and image are for reference and final product is subject to change without notice.

OUTPUT CONNECTOR PIN ASSIGNMENTS

Bottom		Top	
PIN#	Signal Name	PIN#	Signal Name
P1	DC Return	B2	DC Return
P2	DC Return	C2	DC Return
P3	+12V	D2	RS GND
P4	+12V	B4	I2C SDA
LP1	+12V	A3	PS ON/OFF
LP2	DC Return	E3	I2C SCL
A1	A1 (MSB address)	B3	Reserved
B1	A0 (LSB address)	D4	Wake Up Bus
C1	+12V Standby	E4	DC GOOD
D1	+12V Standby	A4	I-share bus
E1	+12V Standby	D3	Reserved
E2	12V RS	C4	SMBAlert
A2	DC Return	C3	Reserved



Compuware Technology Inc.

Tel: 886-2-8226-3936 Address: 5F., No. 232, Liancheng Rd., Zhonghe Dist., New Taipei City 235, Taiwan (R.O.C.)



www.compuware-us.com